



FT750ST Assembly Instructions





A Word From Steve

Thank you for purchasing your new CSC electric bicycle. Your CSC FT750ST Step Through is a great bicycle and we are very proud of it. Your CSC electric bicycle is easy to maintain, it's reliable, and it's fun. You've made a wise purchase decision.

I want you to know that we value the trust and confidence you have in CSC. Our guiding principle will always be that our customers come first.

We wish you many miles of safe and enjoyable riding on your new electric bicycle. If there's anything we can do to enhance your ownership experience, please let us know.

Thank you again,

A handwritten signature in blue ink that reads 'Steve Seidner'.

Steve Seidner
Founder and CEO
CSC Electric Bicycles, LLC
1331 W. Foothill Boulevard
Azusa, California 91702
909 445 0900
www.CSCMotorycles.com

FT750ST Assembly Instructions



Assembling Your Electric Bicycle

Before you start, you'll want the following tools on-hand:

- Hex wrench 4mm, 5mm
- Open end wrench 8mm, 10mm, 15mm
- Side Cutters
- Box Cutter
- Grease
- Rubbing alcohol
- Clean shop towels



Your CSC FT750ST bicycle is delivered in a cardboard box as shown here. The FRONT of the box has the diagram of the bike/rider.



FT750ST Assembly Instructions



With side cutters, cut the straps.



Pry open the top of the box. Be careful of the sharp staples.
Pro Tip: Pull the staples out and discard them.



This is what you'll find inside. Take out the Styrofoam blocks and set them aside. (You'll be using them later.) Take out the small box labeled "Tool Kit".

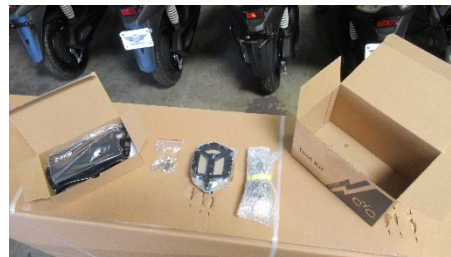


FT750ST Assembly Instructions



Verify the contents of the “Tool Kit” box:

- Battery Charger
- Pedals
- Headlight assembly
- Package containing nuts, bolts, and washer hardware.



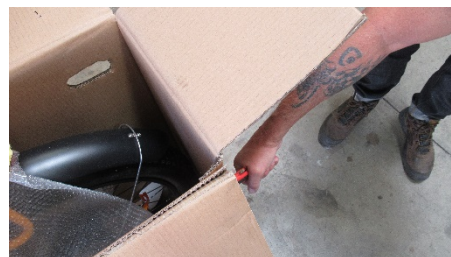
The hardware package.



Using the box cutter, cut open the left side of the box as shown. The front wheel is on the left side

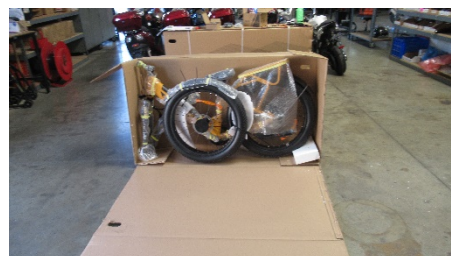


Keep cutting...



Open the side of the cardboard box. This will be your assembly area.

Pro Tip: The bike/box combo will free-stand, but you might want to prop the backside against a wall for additional support.



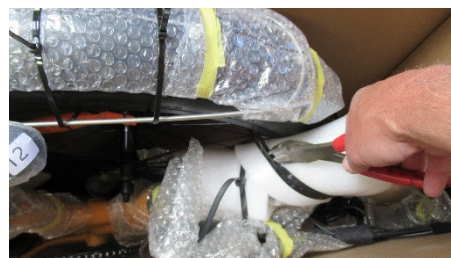
FT750ST Assembly Instructions



Cut the zip-ties holding the front fender to the front tire.
Remove the fender assembly and set aside.



Cut the zip-ties holding the front wheel to the frame. Make sure to get them all!
Pro Tip: Careful when cutting not to damage the frame paint.



Keep clipping!



Remove the front wheel and set it aside.



Remove the bubble wrap. It is held to the rear rack with zip-ties, so be careful when cutting.



FT750ST Assembly Instructions



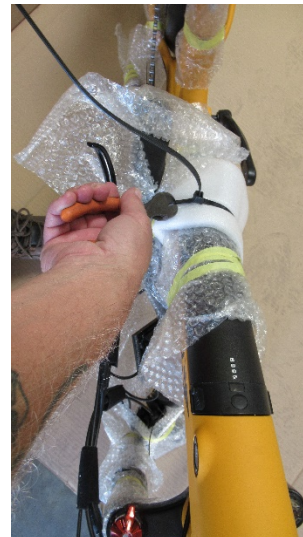
Rotate the bike out of the box.



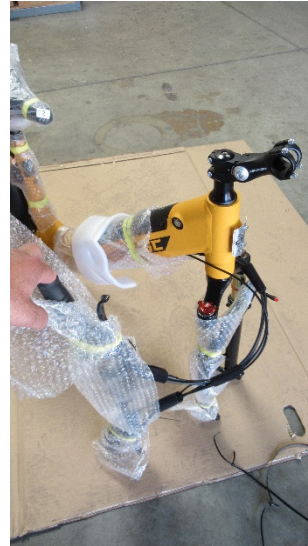
Pro Tip: While the bike will free-stand, put down the kickstand, and use the styrofoam to help stabilize it.



The handlebar assembly is zip-tied to the frame. Cut the zip-ties, be careful not to accidentally cut any of the control lines!



Carefully pull the handlebar assembly away and remove the bubble wrap from the bars and the forks.



Using the 4mm hex key, remove the handlebar clamp from the stem.



FT750ST Assembly Instructions



Position and center the handlebar in the stem as shown here.



Place the handlebar clamp over the handlebars.



Install all four handlebar clamp Allen bolts, and lightly tighten them. Make sure the bars are centered. Rotate the handlebars to your preferred angle and finish torque the allen bolts.



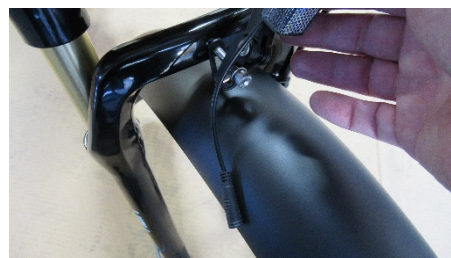
FT750ST Assembly Instructions



Remove the bubble wrap from the front fender and headlight.



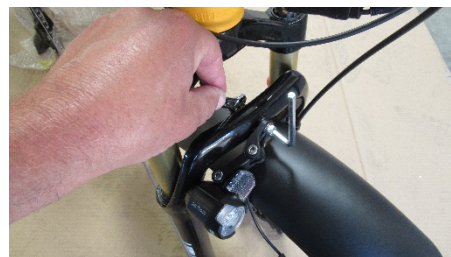
Run the fender mounting bolt through the headlight, fender tab, and fork crown as shown.



Install the washer/nut.



Using the 5mm hex key and 10mm wrench, snug up the main fender mounting bolt.



FT750ST Assembly Instructions



Now it is time to lay the bike on its side.

Pro Tips:

Always lay the bike with the left side down.

Prop up the forks or the headstay with one of the styrofoam blocks.



Using the 4mm hex key and 8mm wrench, install the fender stays, left and right, as shown.

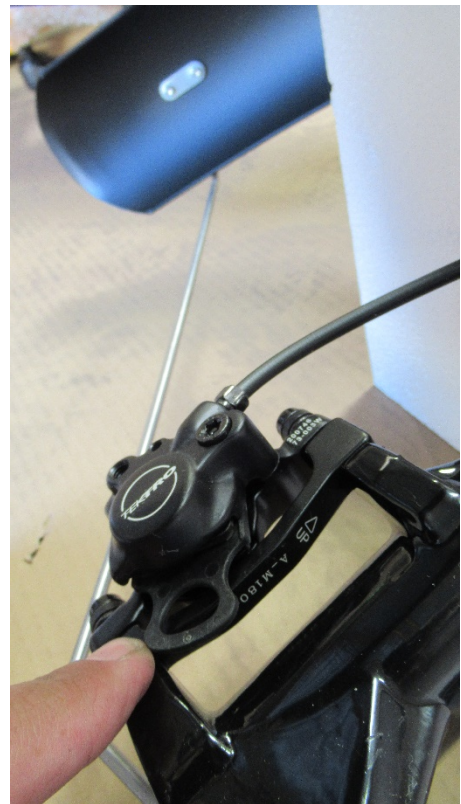
Once all the fender bolts are installed, tighten them all up. Don't forget the top one.



Prep the front wheel by removing the protective end caps on the axle.



Remove the plastic spacer from the front disc brake caliper.



Work the front wheel into place as shown.

Pro Tip: Make sure the brake rotor is properly centered in the caliper brake pads. It should slip right in.



Verify axle is completely inserted into fork dropout. Using the 15mm wrench, tighten down the axle nuts.



Stand the bike back up on its side stand. Remove the remainder of the bubble wrap and packaging.



FT750ST Assembly Instructions



Unwrap the pedals and identify left and right.

The LEFT pedal is marked "WL". This is a LEFT hand thread, which means you'll be turning it COUNTER-CLOCKWISE to install.

The RIGHT pedal is marked "WR". This is a conventional RIGHT hand thread, which means you'll be turning it CLOCKWISE to install.



Using the 15mm wrench, install the pedals as shown.



FT750ST Assembly Instructions



Your FT750ST is now fully assembled.

Pro Tip: Go around the bike and make sure all the nuts/bolts are properly tightened. Inflate tires to 20psi, adjust accordingly for rider weight and terrain.





Warranty

CSC warrants the new CSC electric bicycle to be free from any defect in materials used in the manufacture of the bicycle, and any workmanship defects at the time of its manufacture, for a period of 1 year and for unlimited mileage from the date of purchase by the original purchaser. This warranty is non-transferable.

Any part found to be defective during this period will be repaired or replaced at the discretion of CSC. Any part replaced under the warranty will be covered for the remaining period of the warranty. Any parts replaced under warranty must be returned to CSC and will become the property of CSC.

You must service your electric bicycle in accordance with the maintenance chart in the Owner's Manual, and you should keep a record of all service activities you or a maintenance facility perform on your electric bicycle, in order for the warranty to remain in effect during the warranty period. Failure to do so will void the warranty.

CSC, at its discretion, may authorize repairs or replacement of defective parts falling outside the warranty, but such work shall not be deemed to be any admission of liability.

Conditions and Exclusions

The following conditions and exclusions apply to this warranty:

1. If the electric bicycle is used for competition, misused, inadequately maintained, or incorrectly serviced or maintained, the warranty shall be void.
2. If the electric bicycle has been subject to any modification or repair, or uses replacement parts other than as authorized by CSC, the warranty shall be void.
3. If the electric bicycle has been serviced at the intervals specified in the Owner's Manual or if service records are not kept, the warranty shall be void.
4. Defects induced or caused by incorrect maintenance, incorrect adjustment, or unauthorized repairs or modifications are not covered by this warranty.
5. Defects caused by the use of parts and accessories not authorized by CSC are not covered by this warranty.
6. The warranty does not cover the cost of removal and replacement of parts and accessories, unless such parts and accessories are approved for use by CSC.
7. The warranty does not cover the cost of transportation of the electric bicycle to or from a maintenance repair facility.

8. The warranty does not cover expenses incurred while the electric bicycle is off the road for warranty repairs.
9. Normal service items and other wear items are not covered by this warranty unless there is a manufacturing defect.
10. Front fork seals are not covered by this warranty if leakage occurs as the result of wear due to sand or abrasive damage.
11. Items excluded from warranty coverage include seat, luggage, paint, chrome plating, polished aluminum, or trim deterioration caused by normal wear and tear, exposure to chemicals, or inadequate maintenance.
12. The warranty does not cover any electric bicycles used for commercial, police, or other emergency or government service purposes.
13. The warranty does not cover electric bicycles that have been inadequately lubricated.
14. The warranty does not cover electric bicycles for which the wrong lubricant has been used.
15. The warranty does not cover crash or accident damage.
16. Should a warranty claim become necessary, CSC will not be liable for loss of use, inconvenience, lost time, commercial losses, or other incidental or consequential damage.
17. This warranty shall be interpreted in accordance with US law. Any question arising from this warranty shall be subject to the jurisdiction of US courts.
18. Any statement, condition, representation, description or warranty otherwise contained in any catalogue, advertisement, Internet posting, or other publication shall not be construed as enlarging, varying, modifying, or overriding anything contained herein.
19. CSC reserves the right to make alterations or improvements without notification to any model or machine without obligation to do so to machines already sold.
20. While CSC has made every effort to ensure the accuracy of the information provided herein, product specifications and configurations are subject to change without notice. Product design specifications and colors are subject to change without notice and may vary from those shown.