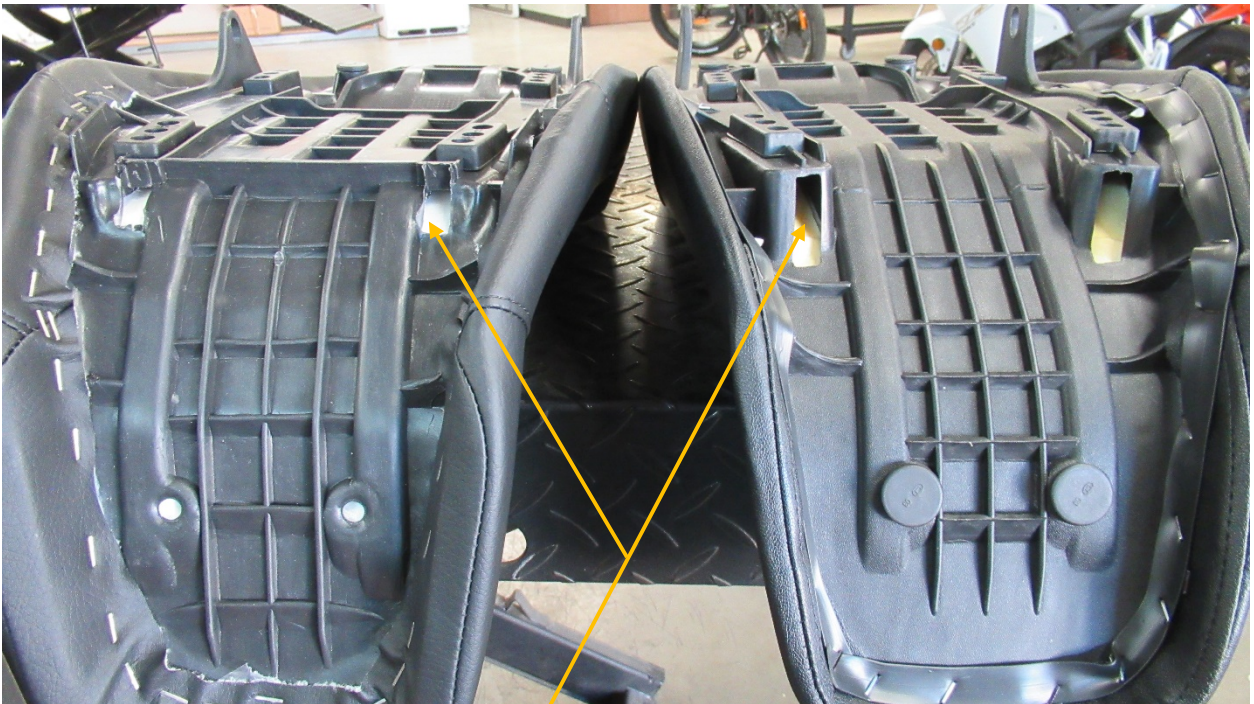
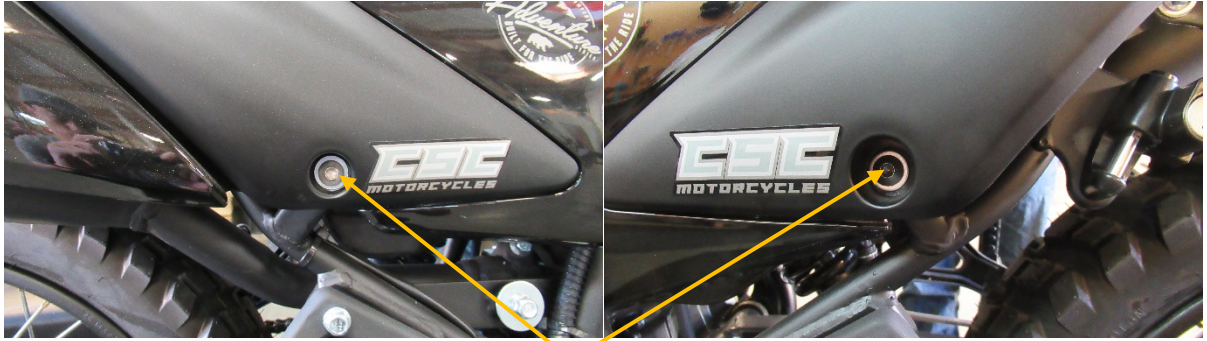




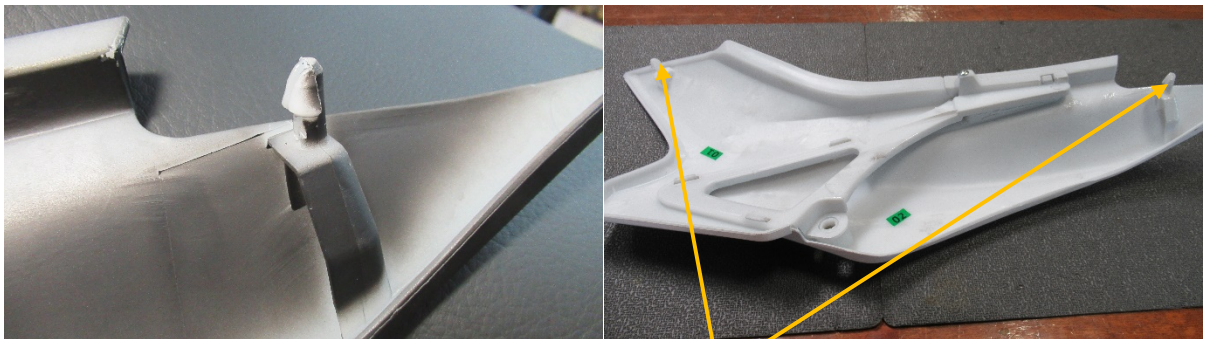
CSC TT250 SEAT CONCEPTS LOWERED SEAT INSTALLATION TUTORIAL



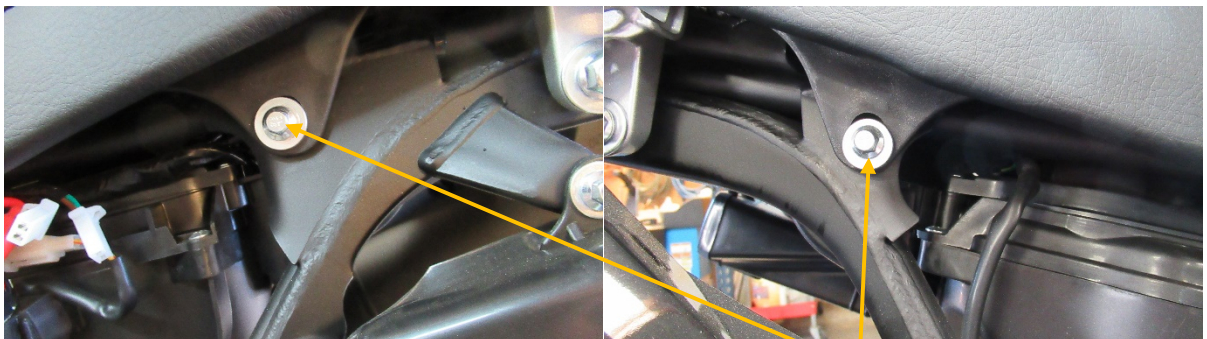
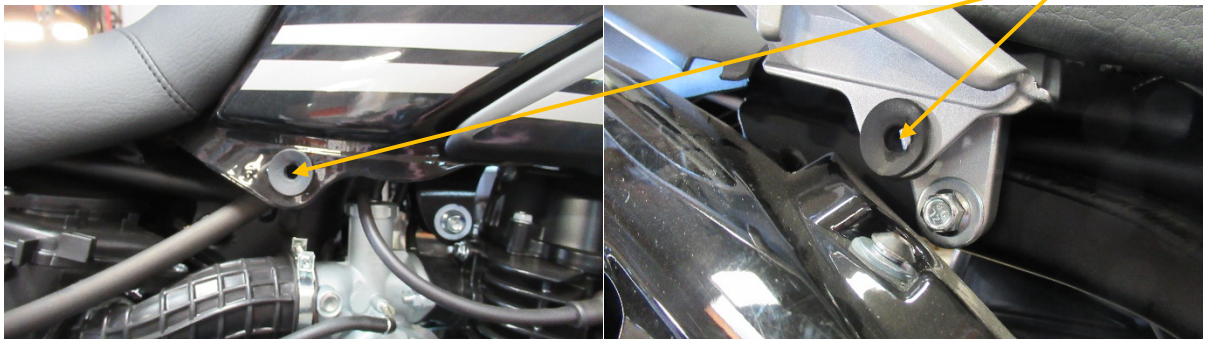
The CSC lowered seat by Seat Concepts lowers your riding position by 3 inches. To achieve this, a different seat pan is used which have smaller hook cutouts. Due to shorter profile and the flexible nature of the seat, additional steps and techniques need to be used for installation. Tools needed can all be found in your tool kit.



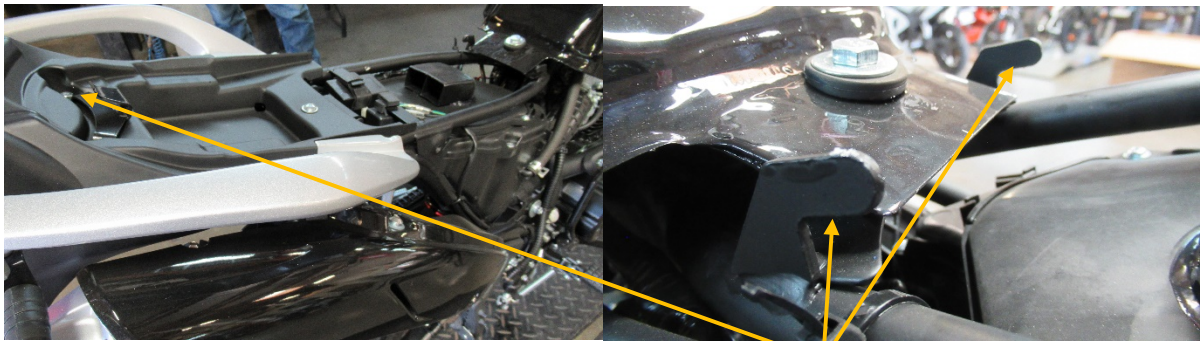
With a 5mm Allen, remove the silver button head Allen bolts on the right and left side panels



Pull the top corners of the side panels out to release the "mushroom pins" from the rubber gromets



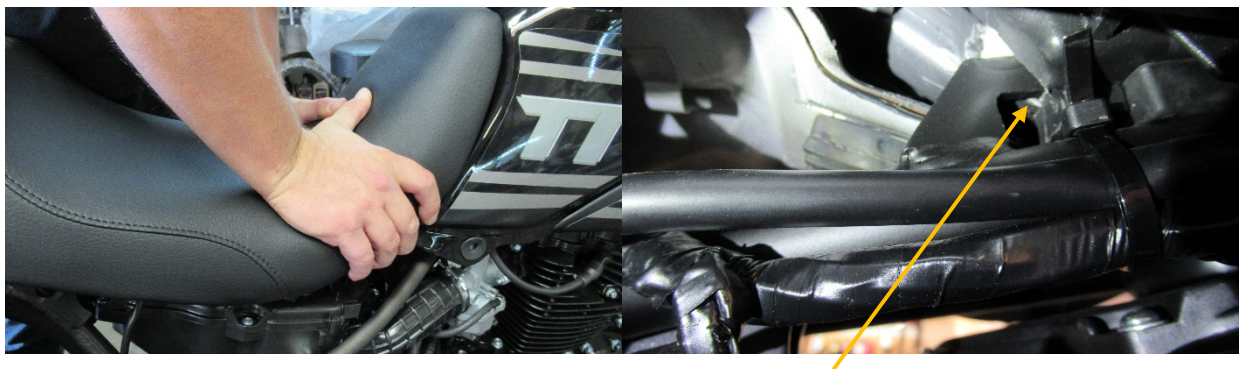
With a 8mm wrench or socket, remove the left and right seat bolts and washers



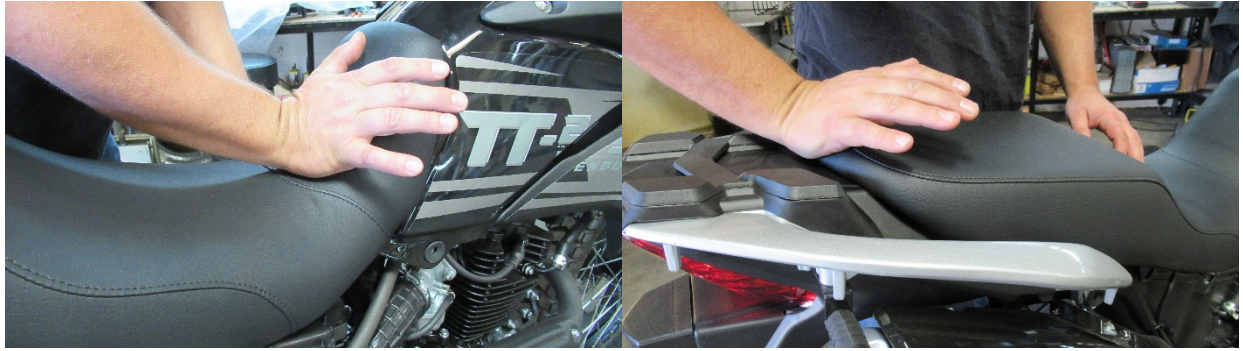
Push seat rearwards to unlatch seat pan from the hooks on the frame



To ease installation of the lowered seat, create additional clearance by pulling back on the nose of the seat and prying up on the rear seat hook



Push firmly *down and forward* to engage seat pan onto the hooks on the frame



With the heel of your palm, firm shoves forward will help fully engage the seat. Verify the rear hook is engaged to the seat pan.



Align the seat so the hole in the pan lines up with the threaded hole in the frame

Install seat bolts with washers and the side panels and the 5mm Allen bolts with washers. Enjoy riding your TT250 with your new lowered seat. If you have questions, go to CSCMotorcycles.com or call (800) 884-4173

